



EMITECH
INFOSYSTEMS

EMITECH INFOSYSTEMS

COMPANY PROFILE

www.emitech-infosystems.com
emitechinfosystems@gmail.com
sales@emitech-infosystems.com



Dr. Parikshit Das
Director Sales
Emitech Infosystems Pvt. Ltd.



#startupindia



“ At Emitech Infosystems, we are passionate about delivering innovative and impactful IT solutions that empower businesses to thrive in today's dynamic digital landscape. Our team of skilled professionals is dedicated to understanding your unique challenges and providing tailored solutions that exceed your expectations. We are committed to building long-term partnerships with our clients, providing exceptional customer service, and fostering a culture of continuous improvement. We invite you to explore our services and discover how Emitech Infosystems can help you achieve your business goals. ”

Table of Content

OUR COMAPNY

04

VISION AND MISSION

05

FLEXIBLE SOLUTIONS

06

SERVICES

07

DRONE SOLUTIONS

09

SUCCESS STORIES

11

OUR CLIENTS

15

CONTACT US

16

Our Company

Welcome to Emitech Infosystems Private Limited (EIPL) a leading IT geospatial company at the forefront of innovation in spatial data analysis and visualization. Our team has the expertise of more than 500+ man months of experience in the IT and geospatial industry. Emitech Infosystems Private Limited is the leading technology startup company with the most innovative ideas and a huge variety of product lines and services. We are DPIIT certified Start-Up Company from the Ministry of Commerce & Industry, Govt. of India, MSME Certified, Govt. of India and **ISO 9001: 2015** Certified GIS and Software Development & Services Company. Emitech Infosystems Private Limited is headquartered in Kolkata, has a pan-India operation, and has provided business solutions to the government and large corporates in India. We being the leading associate and business partner of ESRI, Trimble, IBM, Indrones, Microsoft, Dell, Oracle, Idea Forge & many more propound principal solutions for Geographical Information System (GIS), Remote Sensing (RS) and all the IT related support to the clients across India.



Vision & Mission



VISION

The guiding vision of EMITECH INFOSYSTEMS is "Bringing the best to everyone we touch". By "The best", we mean the best products, the best people and the best ideas. We are committed to attracting, developing, and keeping a diverse work force that reflects the nature of our global business. These three pillars have been the hallmarks of our Company.

MISSION

Our mission is to spur productive expansion through superior client service, quality, innovation and dedication. Utmost client satisfaction is cardinal to our business success. With an overriding goal of realizing all our client's needs, we operate as a catalyst in their business. We incessantly upgrade our knowledge base and thereby keep abreast of all the swiftly transmuting GIS industry trends.





Flexible Solutions

At Emitech Infosystems, our mission is to provide innovative and customized GIS solutions, remote sensing (RS) support, CAD, and staffing solutions to our clients. We constantly strive for excellence by refining quality, expanding capabilities, increasing efficiency, and elevating the superior level of customer service. Our goal is to deliver excellent and targeted solutions with professional integrity. We specialize in delivering end-to-end solutions to ensure the smooth business processes of our clients. By going beyond the ordinary, we consistently provide the best IT software, services, and consultancy to clients across India and the global market. Through a vast network of technology partners and a strong presence in multiple geographic locations, we have achieved notable success in customer service.

IT Support Solutions

- *GIS Application Development*
- *Customized Geospatial Solution*
- *Integration WEB-GIS & MIS*
- *Enterprise Solution*
- *System Integration*
- *Capacity Building*
- *GIS Consulting*
- *AI and ML services for advanced data analysis and decision-making solutions.*
- *Staffing*
- *Cloud Services*
- *Mobile Application Development*
- *Web Hosting*



Geospatial Services

We provide a complete range of geospatial solutions, including web-based GIS applications, regional base mapping, facilities conversion, and GIS consultancy. Emitech Infosystems boasts an expert GIS team that proficiently handles projects of varying complexities. Our team possesses a deep understanding of the factors and potential challenges associated with GIS mapping projects. To ensure optimal results, we conduct in-depth assessments of client requirements. Based on these assessments, we categorize the tasks and deliver tailored, comprehensive solutions.

www.emitech-infosystems.com

EMITECH INFOSYSTEMS

Consultation Services

GIS Consulting

- Analyse and define the project scope based on a comprehensive understanding of the client's requirements.
- Develop a project cost-saving strategy to minimize client investment while maximizing project outputs.
- Regularly review plans and workflows prepared for GIS projects to ensure alignment with objectives.
- Analyse data reports collected from sources such as satellite imagery and field surveys.
- Outline detailed specifications for GIS projects, including accurate processes for implementation and work requirements for vendor outsourcing.
- Select appropriate vendors for services like field surveys and mapping, ensuring alignment with project goals and client expectations.



GIS Solutions

Empower Your Business with Cutting-Edge GIS Solutions

Map Making Services

- Map conversion
- Digitization
- Remote Sensing Services
- Photogrammetry Services
- Survey & Mapping
- Decision Support System Dashboard

Solutions for surveying instruments GPS/DGPS

- Leading provider of precision measuring instruments, including surveying and GPS equipment.
- Comprehensive solutions for surveying, mapping, GIS, and construction applications.
- Reliable, accurate products with long-lasting performance.
- Factory-trained engineers offering efficient after-sales service.

At Emitech Infosystems Pvt. Ltd., we provide cutting-edge GIS services to help organizations manage, analyze, and visualize spatial data via web-based platforms and enterprise solutions.

WebGIS-Services: Access real-time geographic data on any device for urban planning, environmental monitoring, disaster management, and logistics. Create interactive, user-friendly web applications tailored to your needs.

Enterprise GIS Solutions: Scalable platforms for secure GIS integration, data sharing, and advanced analytics to optimize workflows and improve efficiency across departments.

Our solutions, powered by technologies like ESRI ArcGIS Online and Enterprise GIS platforms, deliver dynamic maps, real-time monitoring, and interactive dashboards to enhance decision-making and operational efficiency.



Drone Technology Transforming Industries & Governance

Drone technology is revolutionising industries and enhancing governance by offering innovative data collection, analysis, and implementation solutions. These unmanned aerial systems provide unparalleled precision and efficiency across various applications, enabling smarter decision-making and improved operational outcomes. Drones are reshaping traditional workflows from monitoring forest health and optimizing agricultural practices to ensuring safety in mining operations and supporting government departments in urban planning and disaster management. Their ability to capture high-resolution data, generate detailed maps, and access hazardous or remote areas makes them invaluable tools in modernizing processes and driving sustainable growth. By integrating advanced drone technology, industries and governments can harness actionable insights, streamline operations, and achieve new levels of efficiency and productivity. Explore the transformative power of drones and unlock their potential to elevate your operations.

As a proud partner of industry leaders like Idea Forge and Indrones, we bring the most reliable and advanced drone solutions to our clients. These collaborations empower us to deliver cutting-edge technology tailored to various sectors' unique needs, ensuring precision, safety, and efficiency in every application.



Applications Across Sectors

Forestry Management:

- o Forest Health Monitoring
- o Wildfire Management
- o Reforestation Tracking

Agriculture:

- o Crop Health Assessment
- o Irrigation Planning
- o Yield Prediction

Mining:

- o Surveying and Mapping
- o Volume Measurement
- o Hazard Monitoring

State-wise Generic Departments:

- o Urban Development
- o Disaster Response
- o Revenue and Land Records
- o Environmental Surveillance
- o Transportation Planning



Drone Implementation: Advancing Conservation and Surveillance

Emitech has been at the forefront of drone implementation, delivering innovative solutions for critical environmental and wildlife initiatives. Through Sundarban Tiger Reserve, Department of Forest, Government of West Bengal, we have successfully deployed drones for forest Tiger detection and surveillance. Our work with the Sundarban Tiger Reserve includes advanced tiger-prone zone analysis and tracking surveillance, helping to protect and monitor endangered species.

We have deployed cutting-edge drones equipped with thermal imaging and high-resolution cameras, enabling real-time monitoring and tracking of wildlife activity. This technology allows authorities to identify critical habitats, track animal movements, and respond promptly to potential threats or emergencies. Additionally, we provided end-to-end solutions, including operator training and drone certifications, ensuring seamless integration into conservation efforts.

Our expertise extends to creating actionable insights through geospatial data analysis, and helping forest departments and conservation agencies implement data-driven strategies. By leveraging drone-based solutions, we contribute to preserving biodiversity, mitigating human-wildlife conflicts, and promoting sustainable environmental practices. These efforts underline our unwavering commitment to safeguarding ecosystems and driving innovative approaches to wildlife protection.

Our Clients

Tripura Space Application Centre (TSAC)
Sundarban Tiger Reserve

Case Studies / Success Stories

Tripura State SDG GeoHub



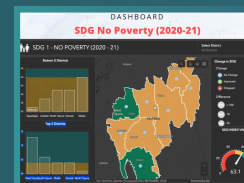
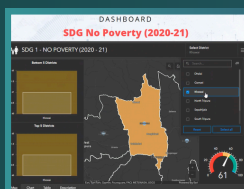
GIS-Enabled Decision Support System for SDGs

Emitech Infosystems Pvt. Ltd. was tasked with developing a GIS-enabled Decision Support System (DSS) to support the Tripura State Sustainable Development Goals (SDGs) initiative. This project aimed to empower good governance, promote sustainable development, and enhance citizen participation by delivering GIS-based decision support services across multiple sectors, including governance, private enterprises, and public domains. The goal was to create a single-window, GIS-based web platform that would facilitate efficient access to geospatial data related to the state's SDGs, providing a centralized resource for real-time data analysis, visualization, and decision-making.

Challenges: Tripura State faced challenges related to fragmented data access, the lack of an integrated platform for SDG tracking, and the need for a user-friendly interface that could be easily accessed by various stakeholders, including senior executives, department users, field teams, and citizens. The complexity of integrating geospatial data with statistical data to generate actionable insights for sustainable development also posed a challenge. Additionally, the solution needed to be device-independent, ensuring accessibility across various platforms.

Solution: Emitech, with its expertise in GIS technologies, designed and deployed a comprehensive GIS-enabled Decision Support System (DSS) that addressed the client's needs. The solution featured:

- A centralized hub integrating maps, apps, data, and GIS tools for a seamless user experience.
- Dynamic dashboards for real-time SDG status visualization.
- Integration of diverse datasets from various departments to support evidence-based decision-making.
- Accessibility via web and mobile devices, empowering field teams and citizens.
- Secure storage and easy access to GIS content, promoting transparency.



The GIS-enabled DSS for the Tripura State SDG GeoHub is a prime example of how Emitech Infosystems Pvt. Ltd. can deliver innovative, geospatial solutions that support sustainable development goals. Our approach to creating a comprehensive, user-friendly platform has empowered the Tripura Space Application Center and other stakeholders to make informed decisions that drive progress towards the state's SDG targets. This deployment not only highlights Emitech's commitment to supporting governance and sustainability initiatives but also demonstrates our ability to leverage cutting-edge geospatial technology to create actionable insights for long-term impact. Through our tailored GIS solutions, Emitech continues to help organizations achieve measurable, sustainable results in their initiatives.

Case Studies / Success Stories

WBSETCL Enterprise WebGIS



West-Bengal
State Electricity & Transmission
Corporation Limited

Development of Enterprise WebGIS and Application for WBSETCL

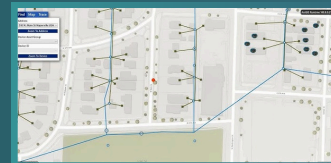
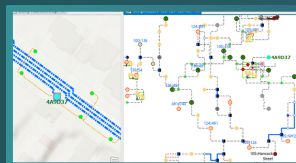
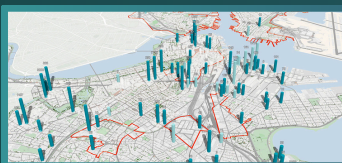
Emitech Infosystems Pvt. Ltd. was tasked with developing an Enterprise WebGIS solution for WBSETCL, aimed at enhancing the management and visualization of the state's electricity transmission network. The goal was to create a robust, scalable, and efficient platform that would allow the client to streamline operations, ensure real-time monitoring, and improve decision-making capabilities.

Challenges: WBSETCL's existing system lacked centralized data management and had limitations in visualizing the vast geographical spread of the transmission infrastructure. The company needed an integrated solution that could support large-scale data from various sources, provide spatial analysis tools, and be accessible across multiple platforms for different users.

Solution: Emitech, with expertise in GIS solutions and an established partnership with industry-leading software providers, took the initiative to approach WBSETCL with a proposal to develop an Enterprise WebGIS application. Our team designed and implemented a comprehensive GIS platform that integrated various geospatial datasets related to transmission lines, substations, and maintenance schedules, among others.

The WebGIS solution was developed with scalability in mind, utilizing the best-suited GIS technology for seamless integration, efficient data visualization, and ease of access. The application provided the following key features:

- The platform allowed WBSETCL to centralize all geospatial data, making it easier to manage and update.
- Real-time data on transmission infrastructure status, including power outages and equipment conditions, was integrated into the platform for quick response and maintenance.
- Custom tools for route optimization, impact analysis, and asset management were included to assist WBSETCL in making data-driven decisions.
- The application was designed to be intuitive, catering to different user levels with varying expertise in GIS technologies.



This successful deployment of the Enterprise WebGIS platform for WBSETCL demonstrates Emitech's capability to deliver complex, large-scale GIS solutions that address real-world challenges in the energy sector. By providing WBSETCL with a comprehensive, user-friendly GIS application, Emitech has not only met the client's immediate needs but also positioned them for future growth in the rapidly evolving energy transmission landscape.

Case Studies / Success Stories

RMC, Odisha

GIS-Driven Urban and Health Information Management System



Rourkela
Municipal Corporation

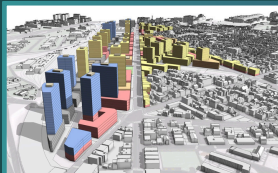
GIS-Based Urban Management Solution for Rourkela Municipal Corporation

Emitech Infosystems Pvt. Ltd. collaborated with Rourkela Municipal Corporation (RMC) to deploy a GIS-based solution aimed at improving urban management through streamlined data collection, visualization, and analysis. The project focused on building information management and health data tracking to support effective decision-making and enhance citizen services.

Challenges: The project faced challenges in seamlessly integrating newly collected building and health data with existing datasets, designing intuitive mobile forms and applications for efficient data collection, and configuring advanced dashboards for ward-wise health data visualization and hotspot identification. Additionally, developing a web application to provide spatially enabled data for administrative decision-making added to the complexity of the task.

Solution: Emitech developed a tailored GIS-based solution for Rourkela Municipal Corporation (RMC), addressing their requirements for building and health data management.

- Designed a mobile application for collecting building data and integrated it with existing datasets in ArcGIS Pro.
- Created a web application for showcasing building information, ensuring efficient access and data sharing.
- Developed custom forms for hospitals and clinics to record ward-wise health data, stored in a centralized database.
- Configured interactive dashboards to visualize disease distribution and hotspots.
- Integrated POI-based search functionality in the web application for streamlined administrative access to health data.



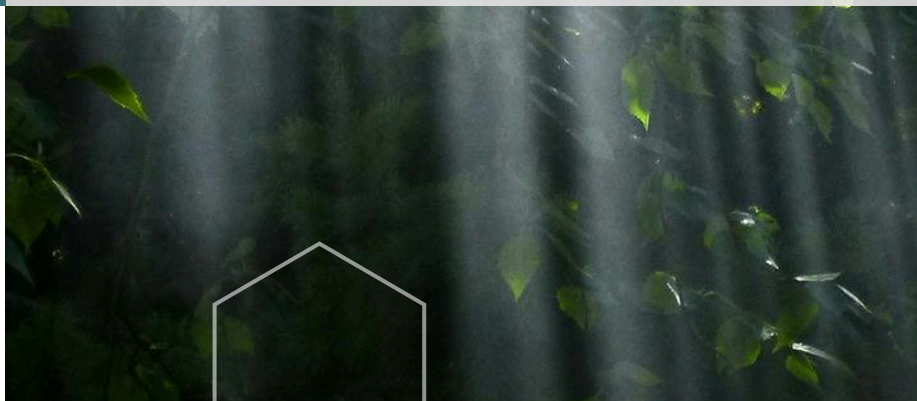
Through its innovative approach and expertise in GIS technology, Emitech Infosystems Pvt. Ltd. delivered a customized urban management solution for Rourkela Municipal Corporation. This project showcases Emitech's capability to leverage GIS for addressing urban challenges and underscores its commitment to empowering municipal authorities with robust tools for sustainable development.



“

Emitech Infosystems Pvt. Ltd., in partnership with Esri India, developed a Web GIS-based Forest Management solution for the Tripura Forest Development Corporation (TFDC), under the supervision of the Tripura Space Application Centre (TSAC). Leveraging Esri's advanced GIS technologies and robust databases, the solution empowers forest managers with tools for plantation and nursery management, resource tracking, fire management, and harvest planning. Key features include easy field data uploads, GIS-based analytics for forest asset visualization, role-based zonal data management, and cost-effective monitoring of forest operations. This collaboration highlights Emitech's expertise in delivering efficient, data-driven GIS solutions for forest resource management.

Emitech Collaborates with Esri India to Develop **Forest- Management Solution**



OUR Client Base

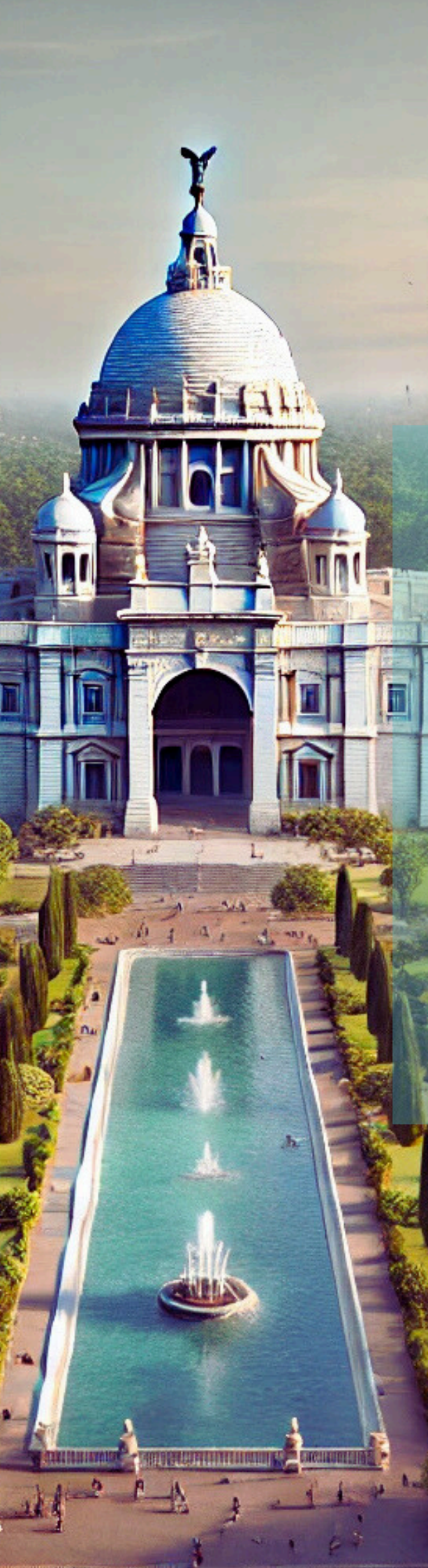


Government

Education

Enterprise Sectors

We take immense pride in collaborating with esteemed organizations across various sectors. Their trust in our expertise reflects our commitment to delivering innovative, reliable, and tailored technology solutions. Together, we have achieved impactful milestones in advancing geospatial and software-driven decision-making.



Contact Us

Emitech Infosystems Pvt. Ltd.



www.emitech-infosystems.com



9681191828 / 9830187605



emitechinfosystems@gmail.com
sales@emitech-infosystems.com

Operation Branch Locations

- Bhubaneswar, Odisha
- Itanagar, Arunachal
- Gangtok, Sikkim
- Patna, Bihar
- Agartala, Tripura
- Guwahati, Assam
- Ranchi, Jharkhand
- Noida, Uttar Pradesh

Registered Office:

P185, Suren Sarkar Road, Kolkata 700010, India

Sales Office:

P223/A Suren Sarkar Road Kolkata 700010, India



EMITECH INFOSYSTEMS